



Heated & Cooled: 2,624 Sqft

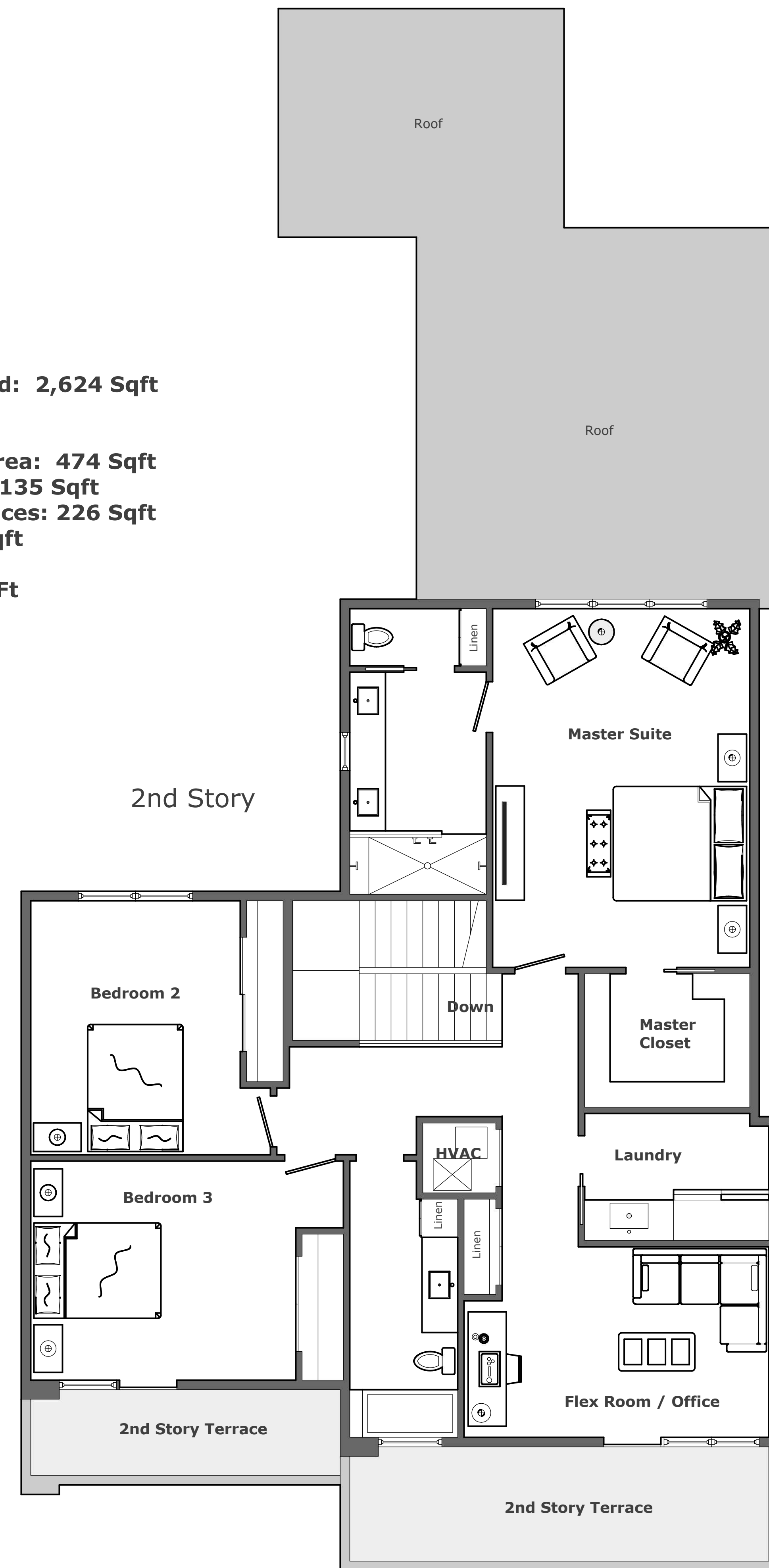
Covered Pool Area: 474 Sqft

Covered Lanai: 135 Sqft

2nd Story Terraces: 226 Sqft

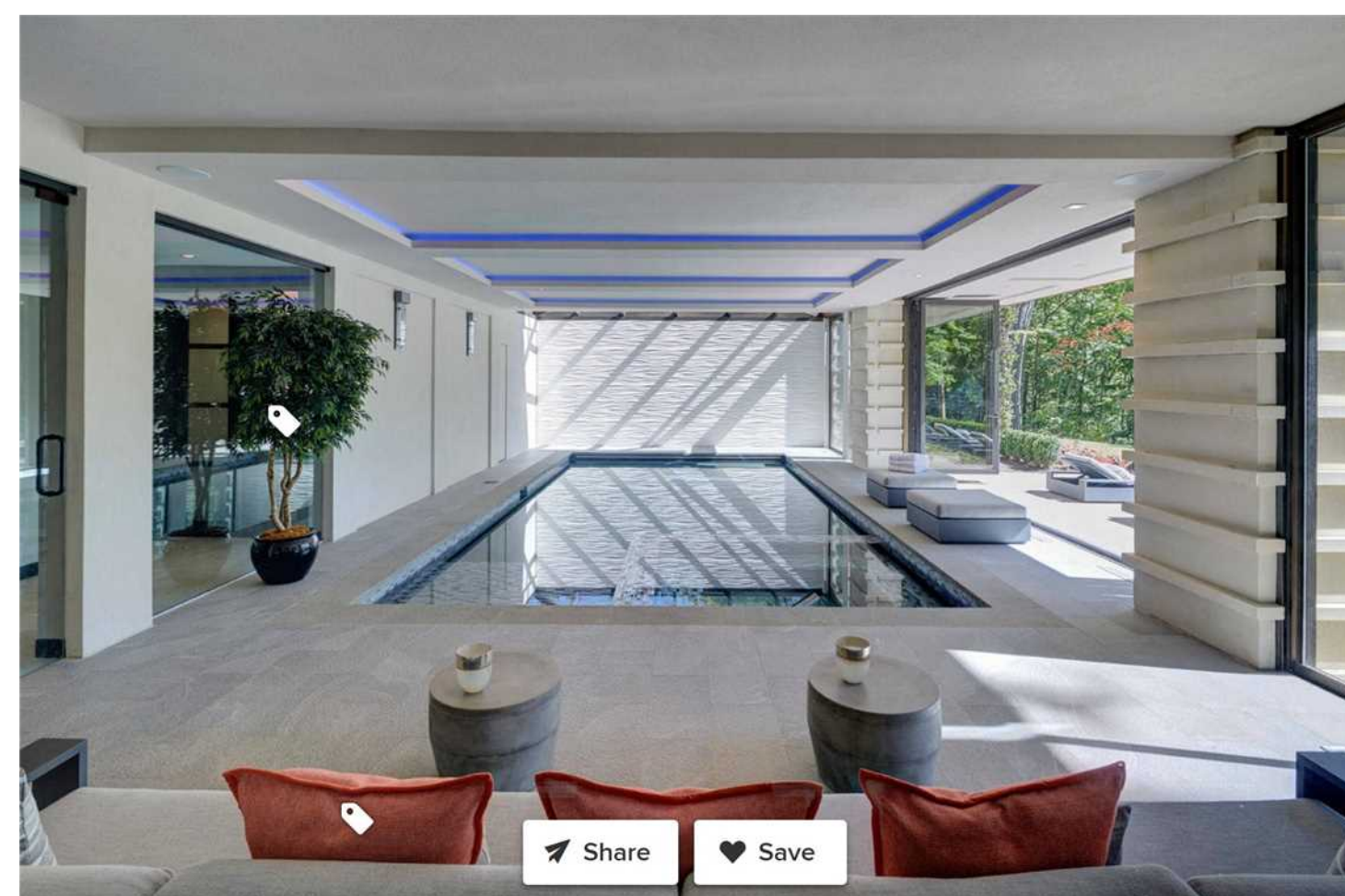
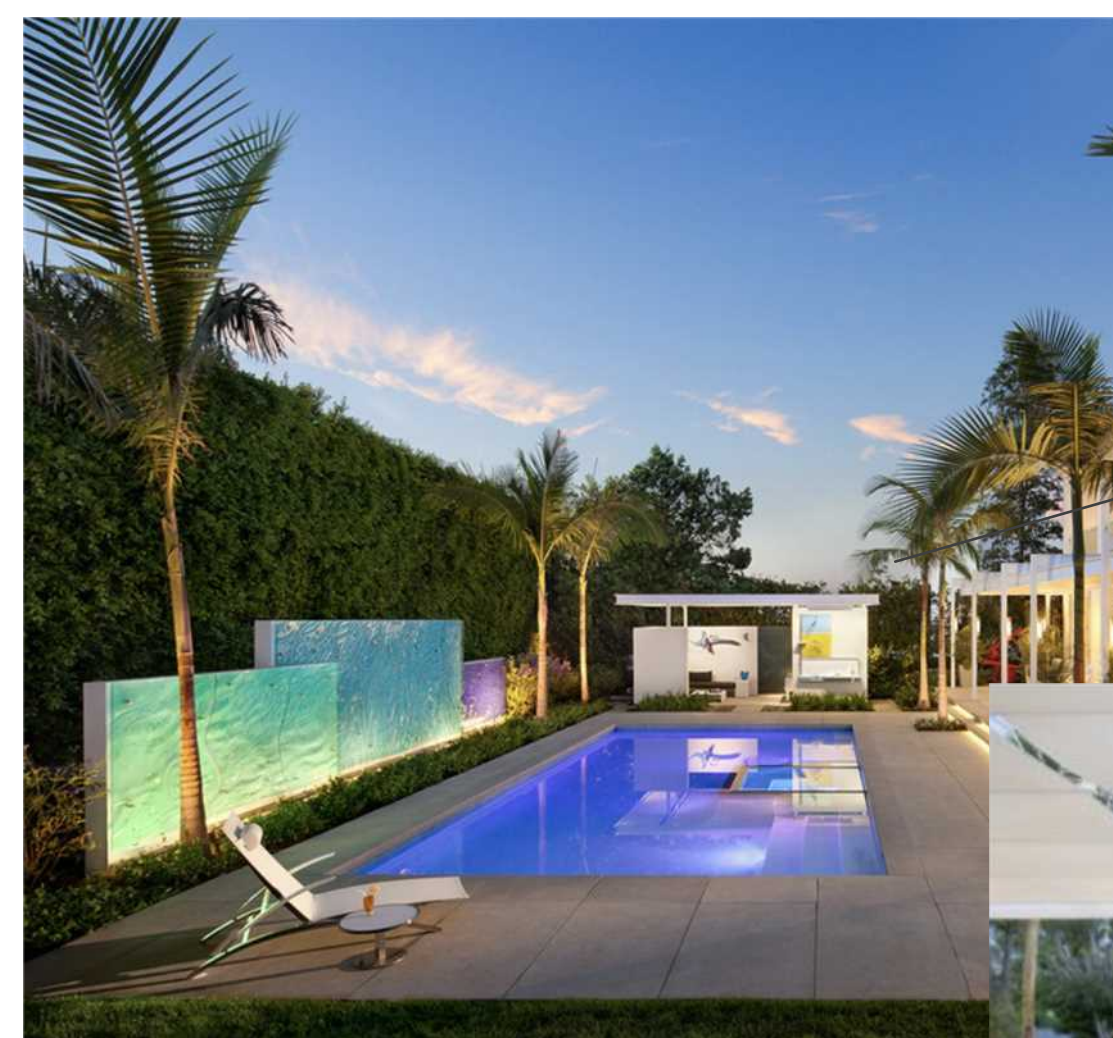
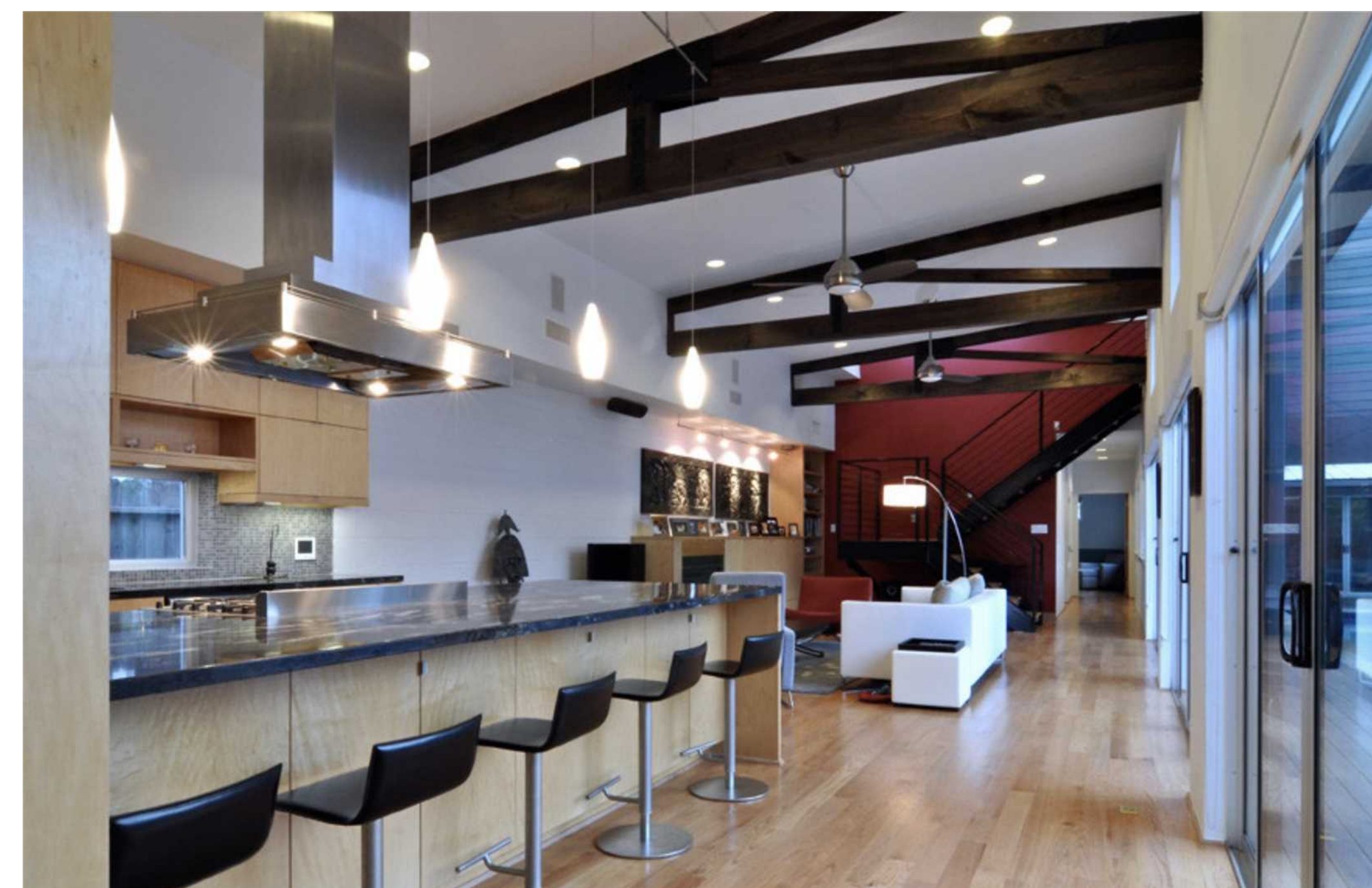
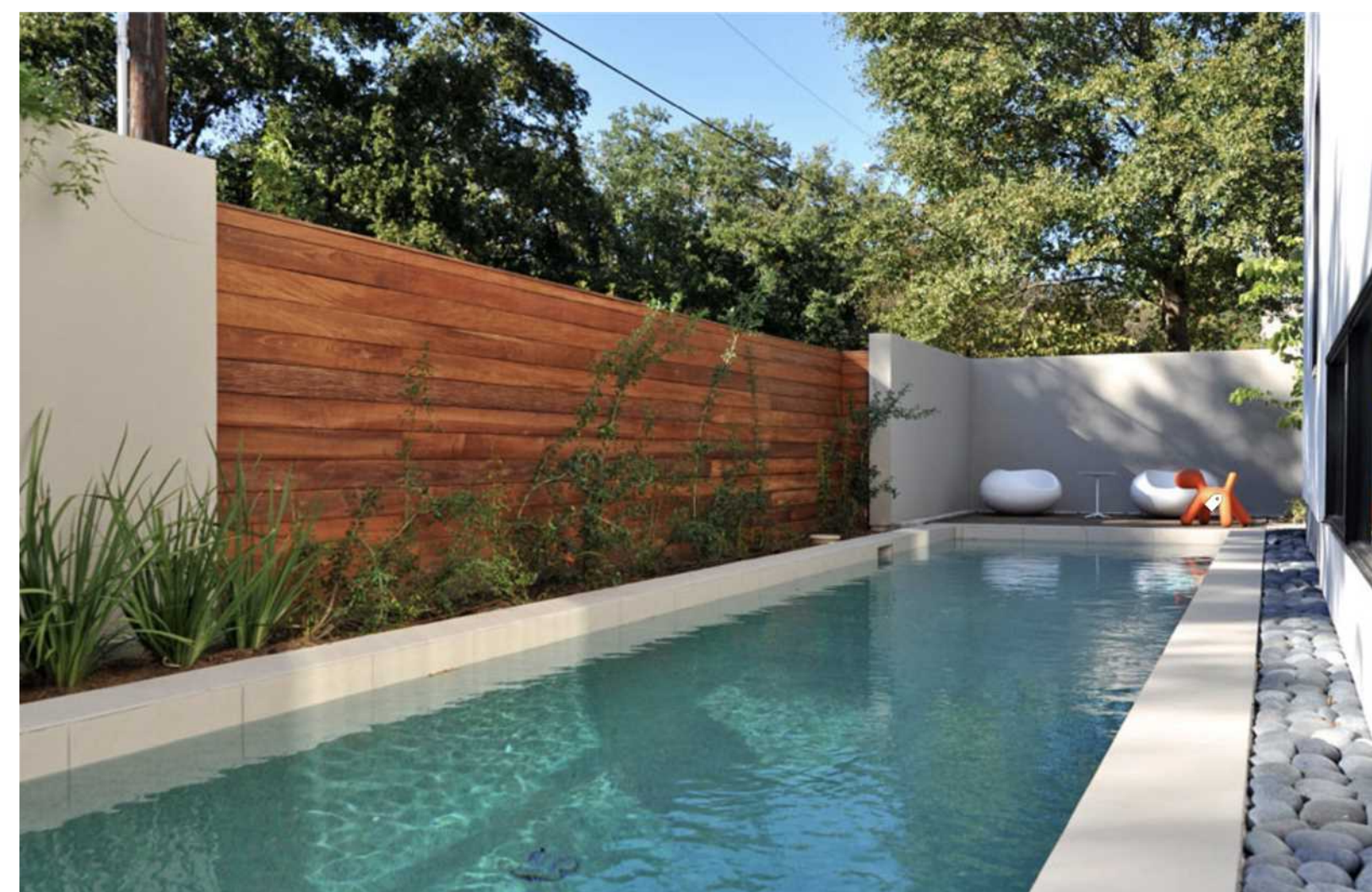
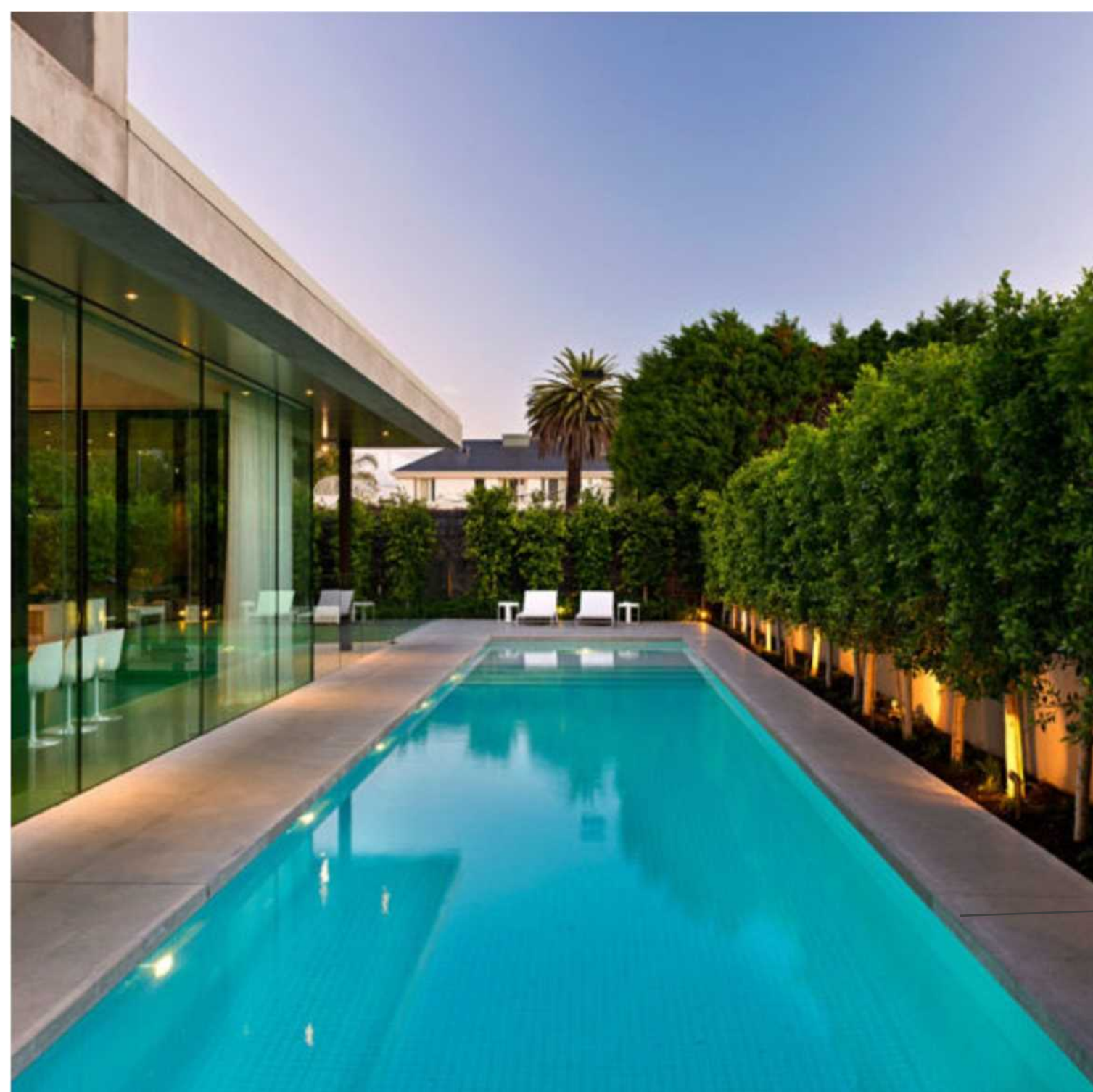
Garage: 537 Sqft

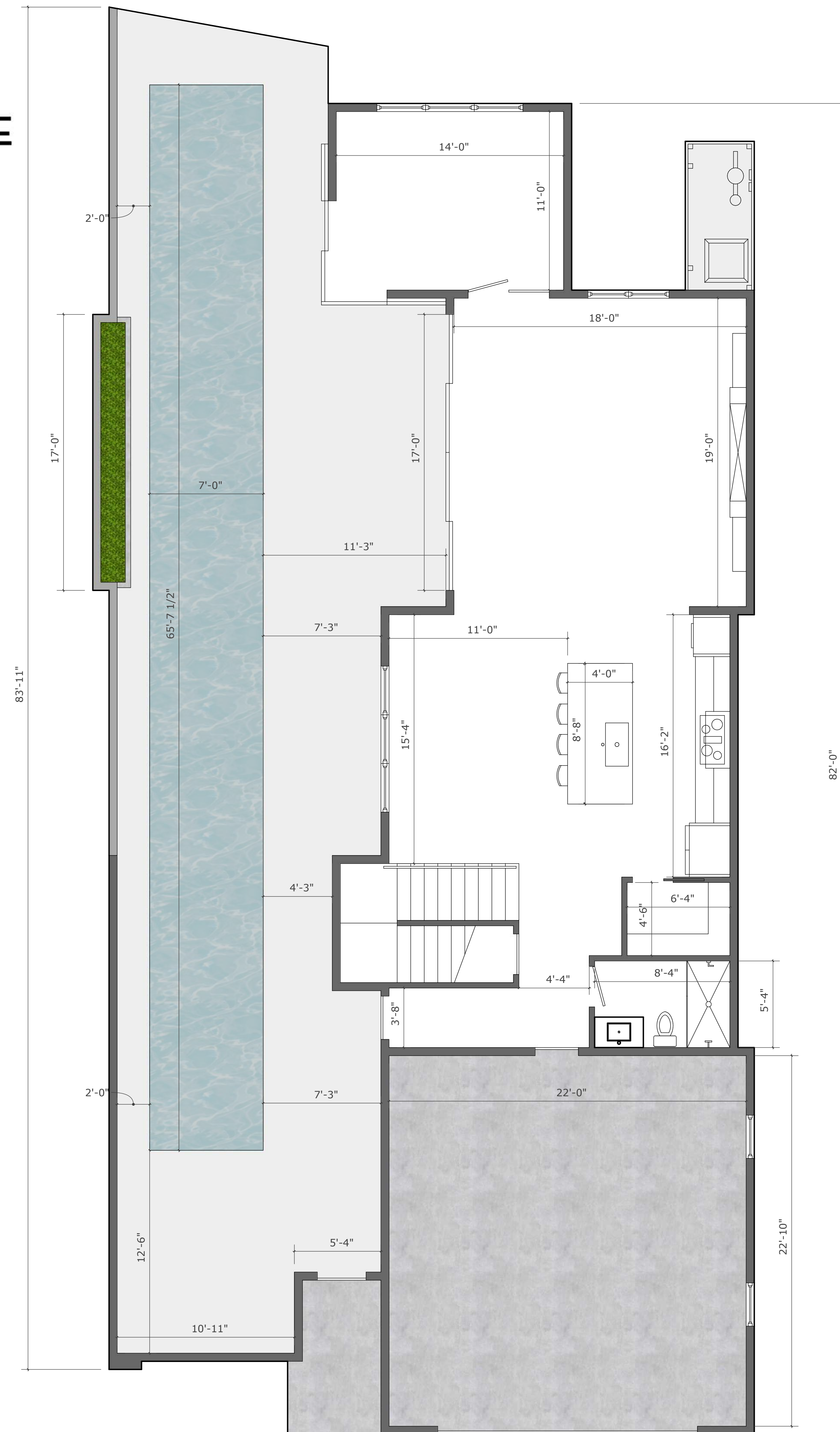
Total: 3,995 Sqft



Scale: 1/4" = 1'

Concept Images

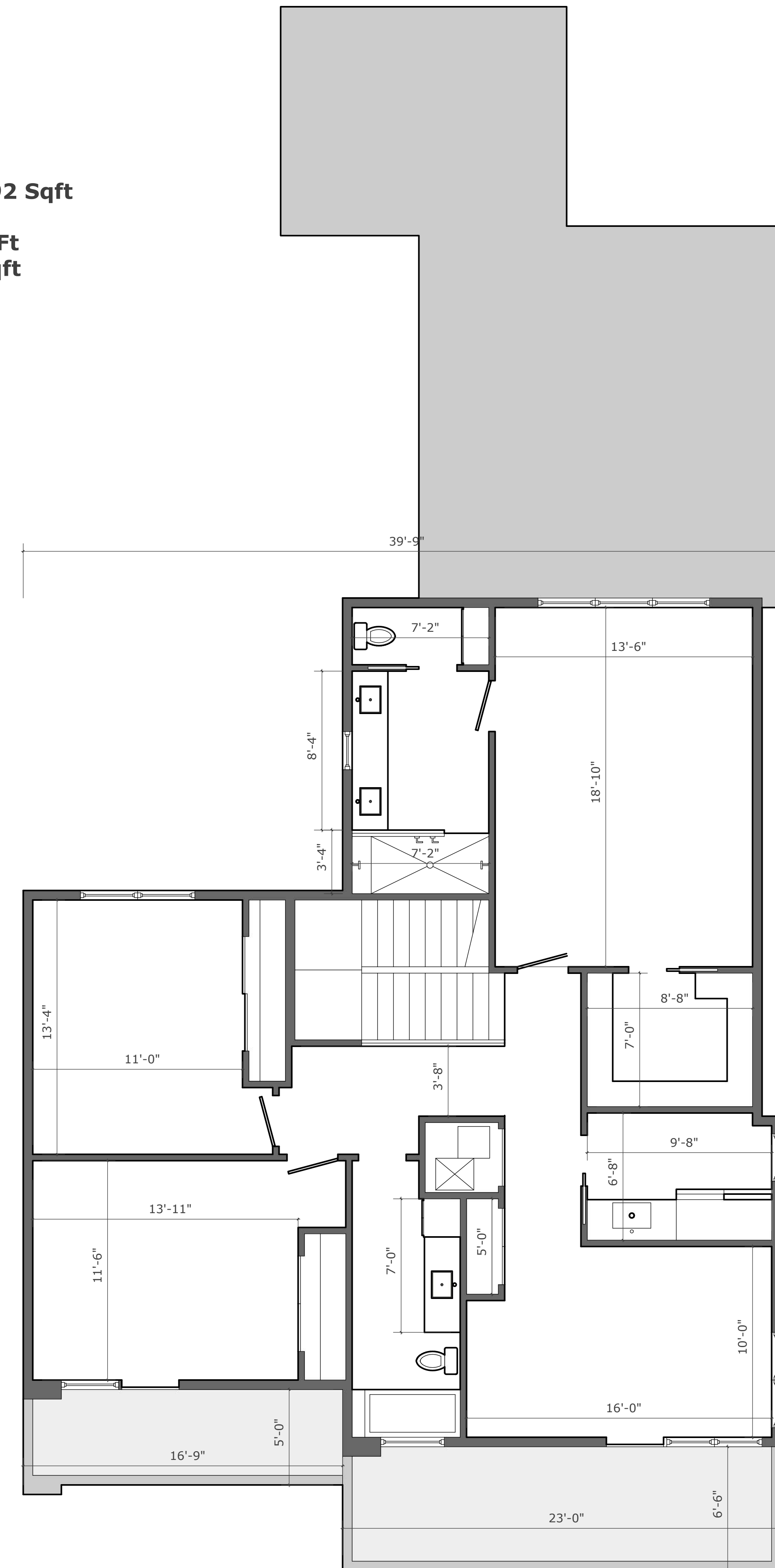




Heated & Cooled: 2,792 Sqft

Front Porch: 1,124 Sqft
Covered Lanai: 258 Sqft
Garage: 589 Sqft

Total: 4,764 Sqft

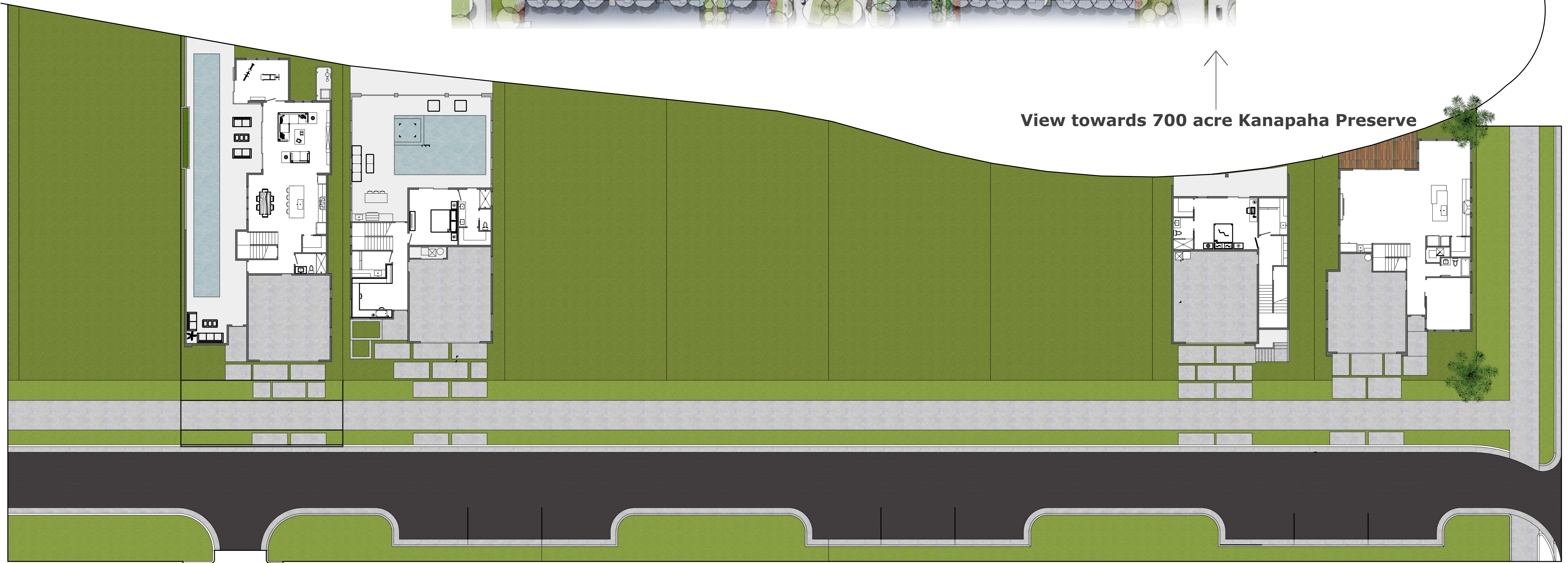


Scale: 1/4" = 1'



View towards 700 acre Kanapaha Preserve

View towards 700 acre Kanapaha Preserve



Lot 89

Lot 88

Lot 95

Lot 96

